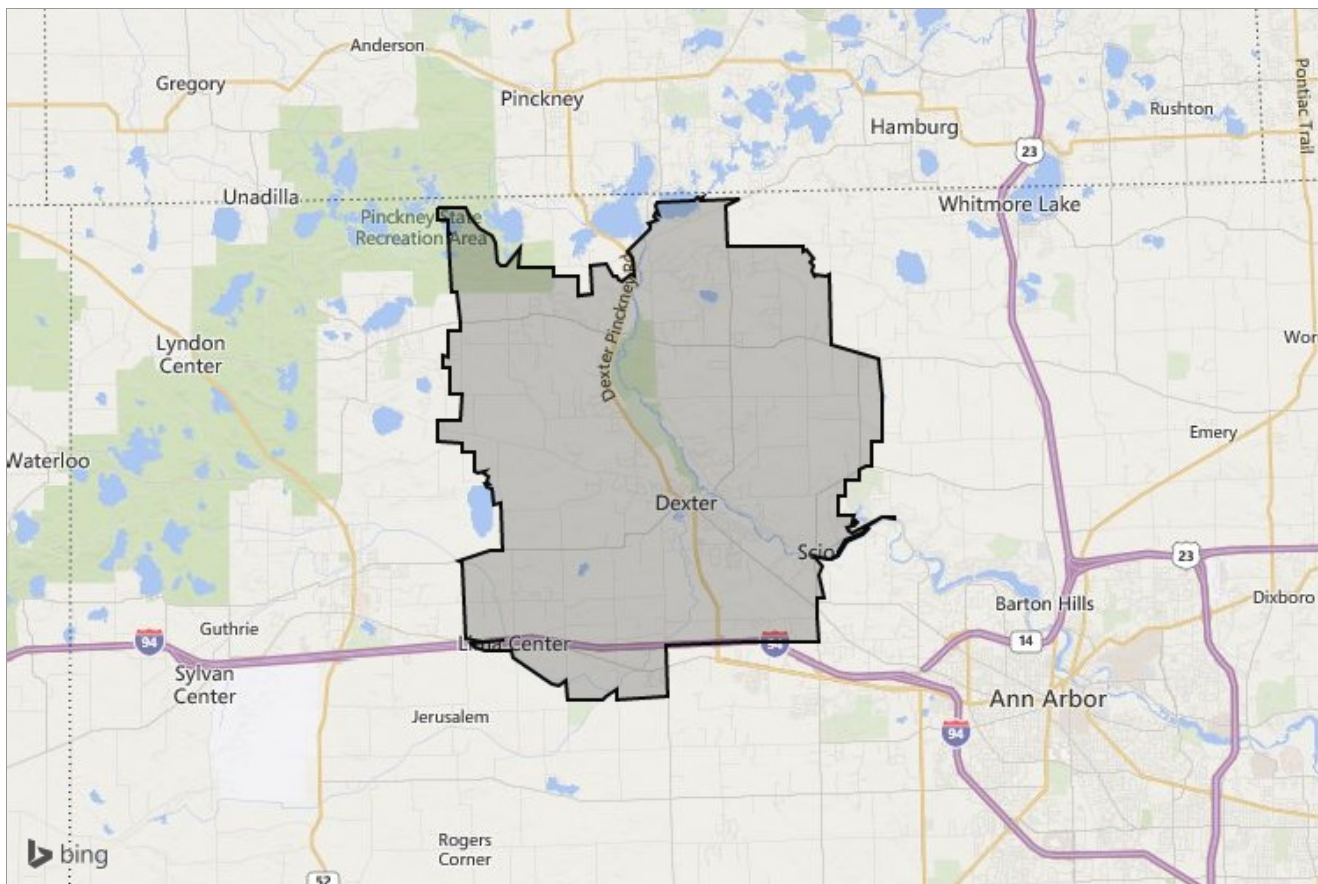




Real Estate Mortgage Title Insurance

NEIGHBORHOOD REPORT

# Dexter, MI 48130



Presented by

## Rob Guilloz

Michigan Real Estate License: 6501371034



Mobile: (734) 408-4460 | Fax: (734) 378-4011

[Rob@HomeWithRob.com](mailto:Rob@HomeWithRob.com)  
<http://HomeWithRob.com>

Howard Hanna Ann Arbor  
1898 West Stadium Blvd.  
Ann Arbor, MI 48103

## Neighborhood: Housing Stats and Charts

	48130	Washtenaw County	Michigan
Median Estimated Home Value	\$276K	\$217K	\$117K
Estimated Home Value 12-Month Change	8.1%	6.4%	8.3%
Median List Price	\$348K	\$230K	\$130K
List Price 1-Month Change	-5.2%	0%	-
List Price 12-Month Change	16.4%	6.9%	11%
Median Home Age	28	43	53
Own	87%	61%	73%
Rent	13%	39%	27%
Vacancy	1.98%	3.71%	-
\$ Value of All Buildings for which Permits Were Issued	-	\$56.9M	\$1.55B
% Change in Permits for All Buildings	-	50%	25%
% Change in \$ Value for All Buildings	-	29%	32%

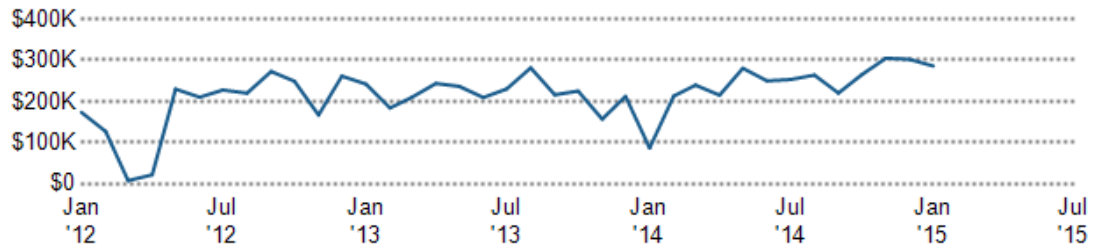
### Median Sales Price vs. Sales Volume

This chart compares the price trend and sales volume for homes in an area. Home prices typically follow sales volume, with a time lag, since sales activity is the driver behind price movements.

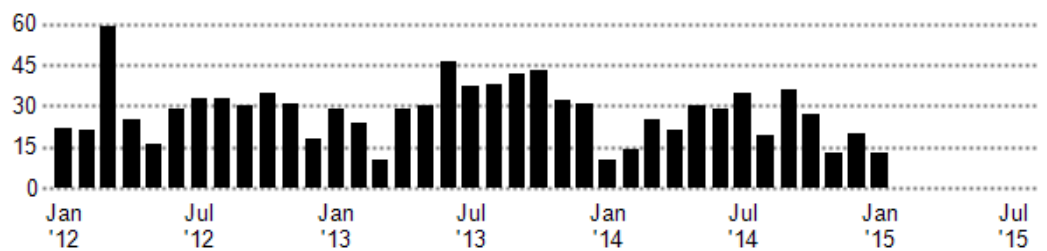
Data Source: Public records data  
Update Frequency: Monthly

■ Median Sales Price  
■ Sales Volume

Median Sales Price



Sales Volume



## Median Listing Price vs. Listing Volume

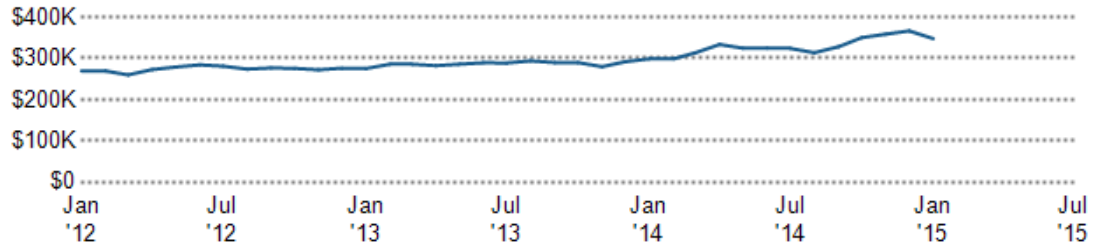
This chart compares the listing price and listing volume for homes in an area. Listing prices often follow listing volume, with a time lag, because supply can drive price movements.

Data Source: On- and off-market listings sources

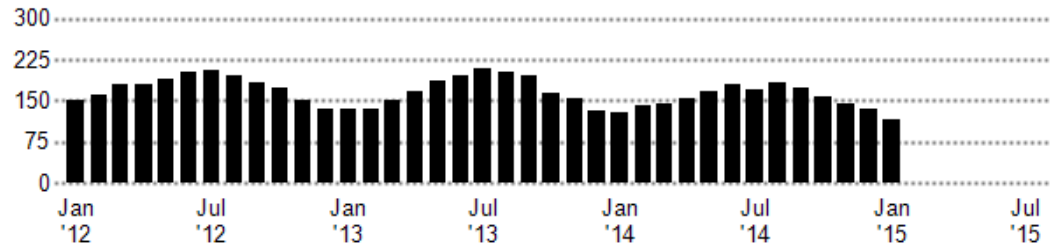
Update Frequency: Monthly

■ Median List Price  
■ Listing Volume

Median List Price



Listing Volume



## Price Range of Homes Sold

This chart shows the distribution of homes reported sold in the past six months within different price ranges in the area of your search. The amount shown for the subject property is sold data where available, or the property's estimated value when sales data are unavailable (such as a non-disclosure state) or provided in range format.

Data Source: Public records data

Update Frequency: Monthly

■ Sales Count By Price Range



## Age Range of Homes Sold

This chart shows the distribution of homes reported sold in the past six months of different age ranges in the area of your search.

Data Source: Public records data

Update Frequency: Monthly

■ Sales Count by Age of House



## Neighborhood: People Stats and Charts

	48130	Washtenaw County	Michigan
Population	14.2K	346K	9.9M
Population Density per Sq Mi	247	490	175
Population Change since 2000	33%	7.2%	-0.4%
Median Age	39	33	39
Male / Female Ratio	48%	49%	49%
High School Graduate	16%	16%	31%
2-Year Degree	27%	27%	32%
Bachelor Degree	28%	25%	16%
Post-graduate Degree	26%	26%	10%

### Population of Children by Age Group

This chart shows the distribution of the population of children by age range — from birth to 17 — in the area of your search.

Data Source: U.S. Census  
Update Frequency: Annually

48130

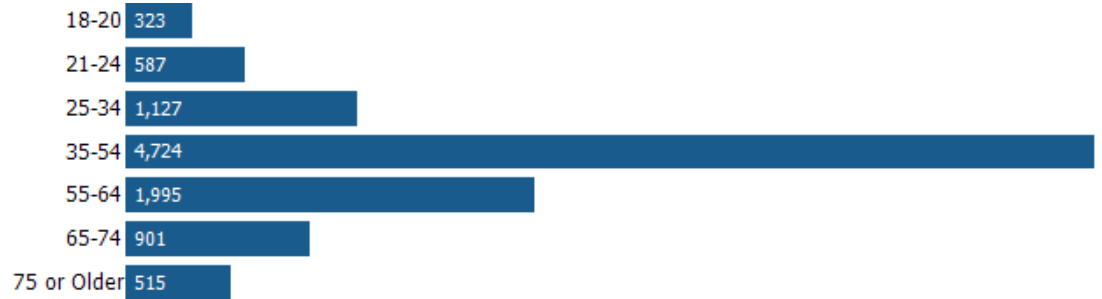


### Population of Adults by Age Group

This chart shows the distribution of the population of adults by age range — from 18 to 75-plus — in the area of your search.

Data Source: U.S. Census  
Update Frequency: Annually

48130



### Households With Children

This chart shows the distribution of households with children, categorized by marital status, in the area of your search.

Data Source: U.S. Census  
Update Frequency: Annually

48130



## Household Income Brackets

This chart shows annual household income levels within an area.

Data Source: U.S. Census

Update Frequency: Annually

48130



## Presidential Voting Pattern

This chart shows how residents of a county voted in the 2012 presidential election.

Data Source: USElectionAtlas.org

Update Frequency: Annually



## Neighborhood: Economic Stats and Charts

	48130	Washtenaw County	Michigan
<b>Income Per Capita</b>	\$39,397	\$32,853	\$25,547
<b>Median Household Income</b>	\$87,575	\$59,063	\$48,471
<b>Unemployment Rate</b>	–	3.2%	5.6%
<b>Unemployment Number</b>	–	6.12K	264K
<b>Employment Number</b>	–	183K	4.46M
<b>Labor Force Number</b>	–	189K	4.72M

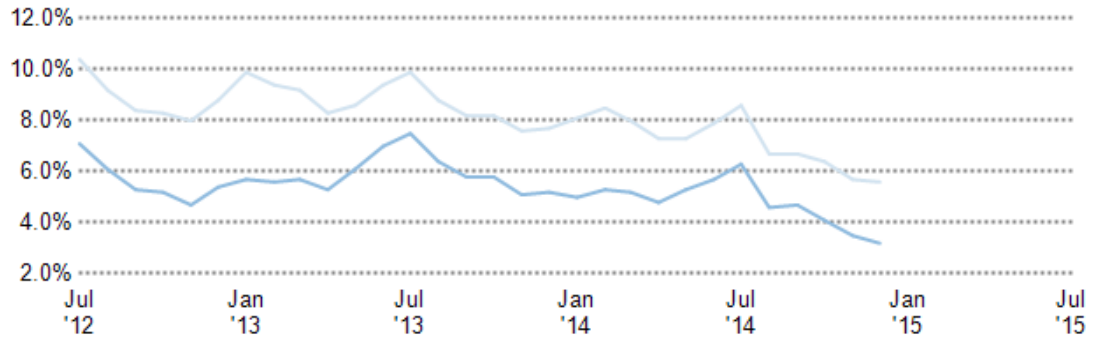
### Unemployment Rate

This chart shows the unemployment trend in the area of your search. The unemployment rate is an important driver behind the housing market.

Data Source: Bureau of Labor Statistics

Update Frequency: Monthly

- Washtenaw County
- Michigan



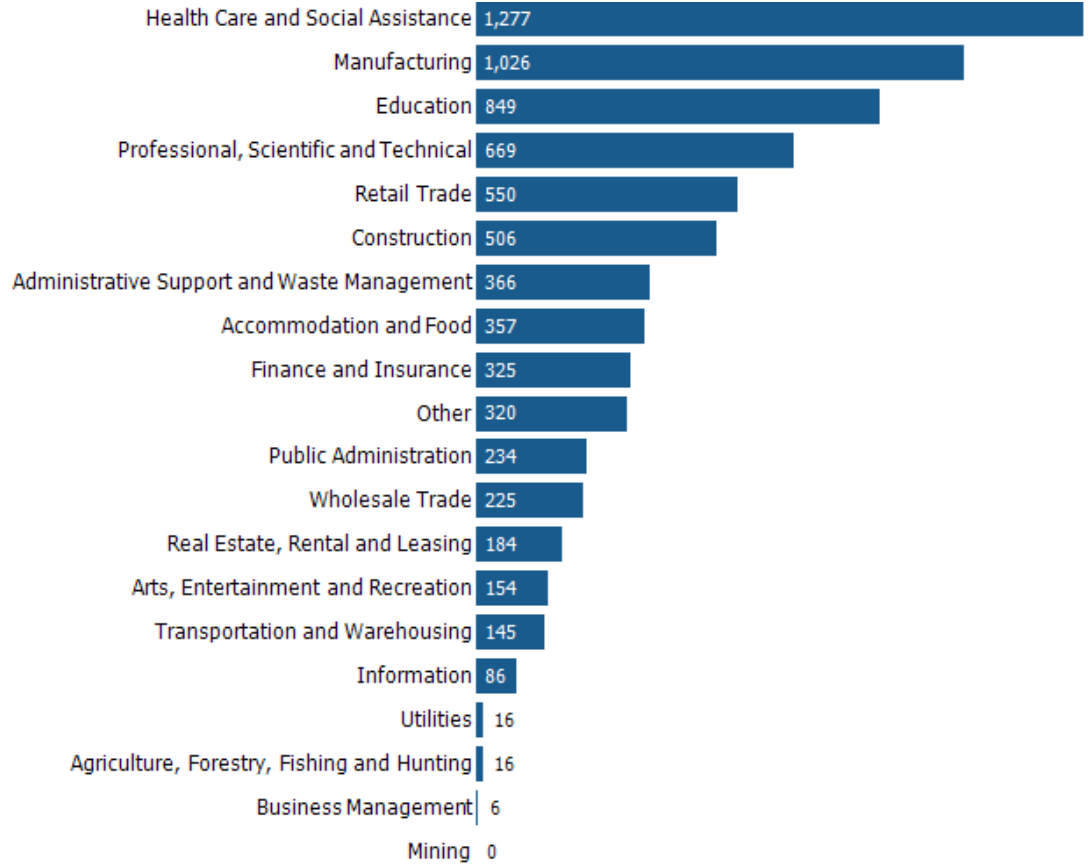
## Occupational Categories

This chart shows categories of employment within an area.

Data Source: U.S. Census

Update Frequency: Annually

■ 48130



## Neighborhood: Quality of Life Stats and Charts

### Quality of Life in 48130

	48130	Washtenaw County	Michigan
Elevation (in feet)	859	860	–
Annual Rainfall (in inches)	35.01	35	33.29
Annual Snowfall (in inches)	42.05	41.44	60.25
Annual Sunny Days	67	67	69
Avg Travel Time to Work (in minutes)	29	23	24
Water Quality - Health Violations	–	–	–
Water Quality - Monitoring and Report Violations	–	–	–
Superfund Sites	0	1	90
Brownfield Sites	Yes	Yes	Yes

### Average Commute Time

This chart shows average commute times to work, in minutes, by percentage of an area's population.

Data Source: U.S. Census  
Update Frequency: Annually

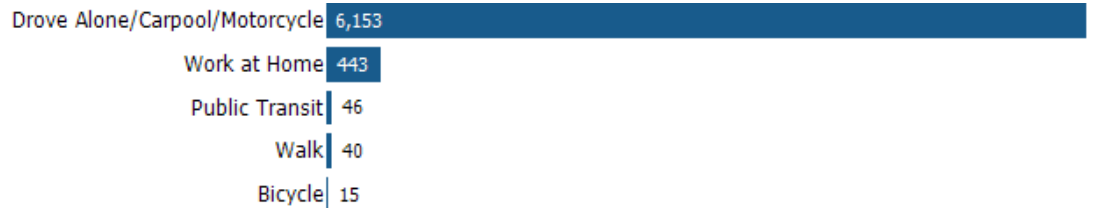
48130



### How People Get to Work

This chart shows the types of transportation that residents of the area you searched use for their commute.

Data Source: U.S. Census  
Update Frequency: Annually



### Average Monthly Temperature

This chart shows average temperatures in the area you searched.

Data Source: NOAA  
Update Frequency: Annually

